

2022 FDRA PORTLAND



Port of  
**LONG BEACH**  
THE PORT OF CHOICE

# PORT COMMERCIAL UPDATE

Cesar Sanchez

Business Development Division

Sept 27, 2022



An aerial photograph of a port area, likely Los Angeles, showing a large body of water and surrounding urban development. A dashed white line runs diagonally across the image, separating the upper-left section from the lower-right section. The upper-left section is labeled 'PORT OF LOS ANGELES Since 1907' and the lower-right section is labeled 'PORT OF LONG BEACH Since 1911'. The image is in a dark blue monochrome color scheme.

**PORT OF  
LOS ANGELES**

Since 1907

*Port of  
Long Beach*

**PORT OF  
LONG BEACH**

Since 1911

*Port of*



# WORLD'S 9<sup>TH</sup> BUSIEST PORT COMPLEX

No. 1 & 2 ports in North America

17.3 million TEUs in 2020

**20.1 million TEUs in 2021**

**40%** of all U.S. inbound containers

25% of all U.S. outbound containers

Port of  
Los Angeles







# LANDLORD PORT

No local tax dollars

Revenue from terminal leases

Net income reinvested in each port

\$200 billion in trade

2.6 million U.S. jobs

51,000 Long Beach jobs



# PORT OF LOS ANGELES

Since 1907

# PORT OF LONG BEACH

Since 1911



SSA  
PIER A

SSA  
PIER C



STOR / PIER S

TTI  
PIER T

LBCT  
PIER E



WBCT  
PIER 100-131

TRAPAC  
PIER 136-147



YTI  
PIER 212-225



EVERPORT  
PIER 226-236



FMS  
PIER 300



APMT  
PIER 400



ITS  
PIER G



SSA PCT  
PIER J

# SAN PEDRO BAY



# NEW CARRIERS



**BAL** BAL CONTAINER LINE CO.,LTD



**LIHUA**





# 2021 MILESTONES

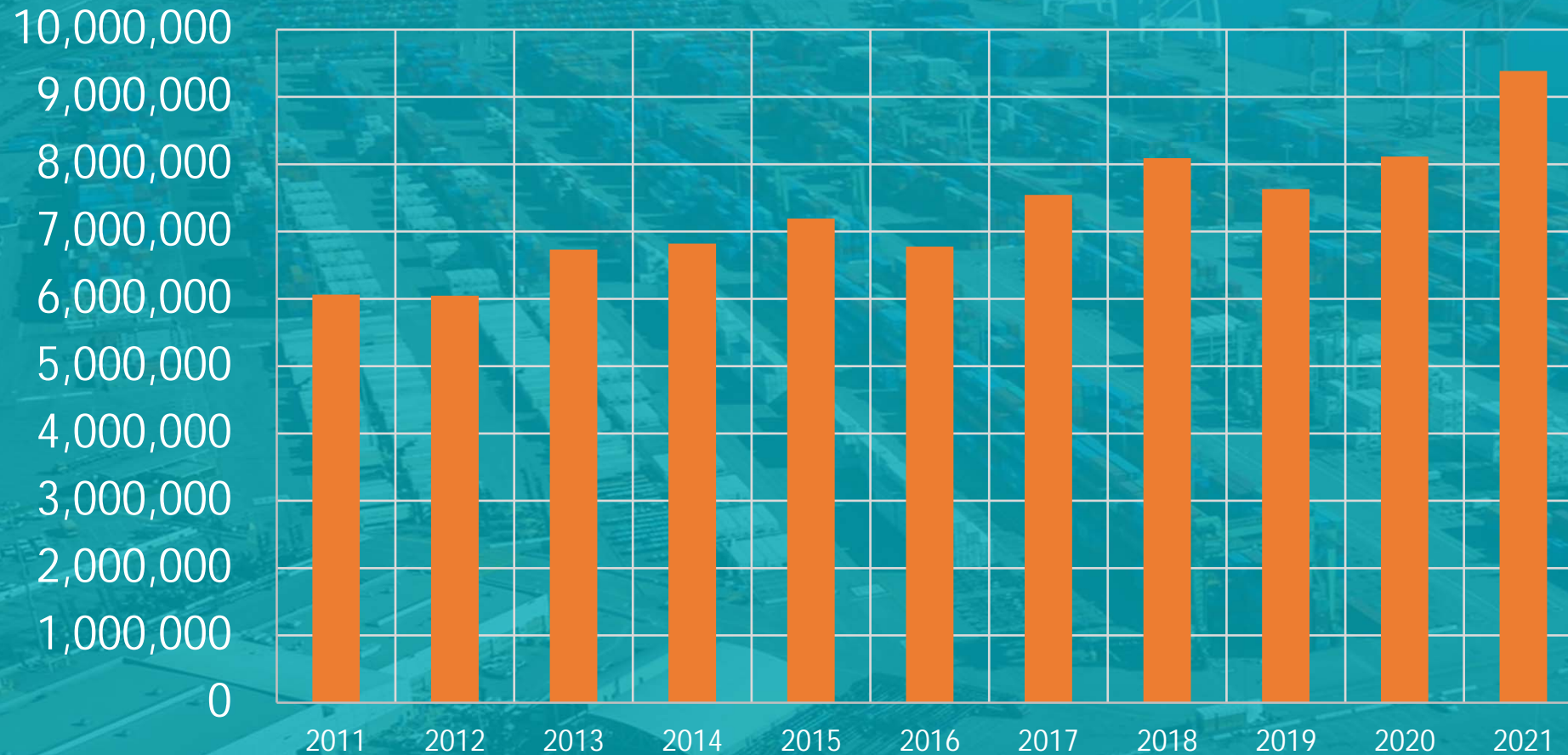
9.38 Million TEUs

15.7% increase from 2020, previous best  
#1 Loaded Export Port in U.S.



# CARGO VOLUME 2011 TO 2021

Annual TEU





# H1 2022 VOLUME

CATEGORY	H1 2022	H1 2021	% CHANGE
INBOUND	2,460,406	2,315,171	6.3%
OUTBOUND	710,593	751,741	-5.5%
EMPTIES	1,762,862	1,609,745	9.5%
TOTAL	5,007,778	4,753,828	5.3%

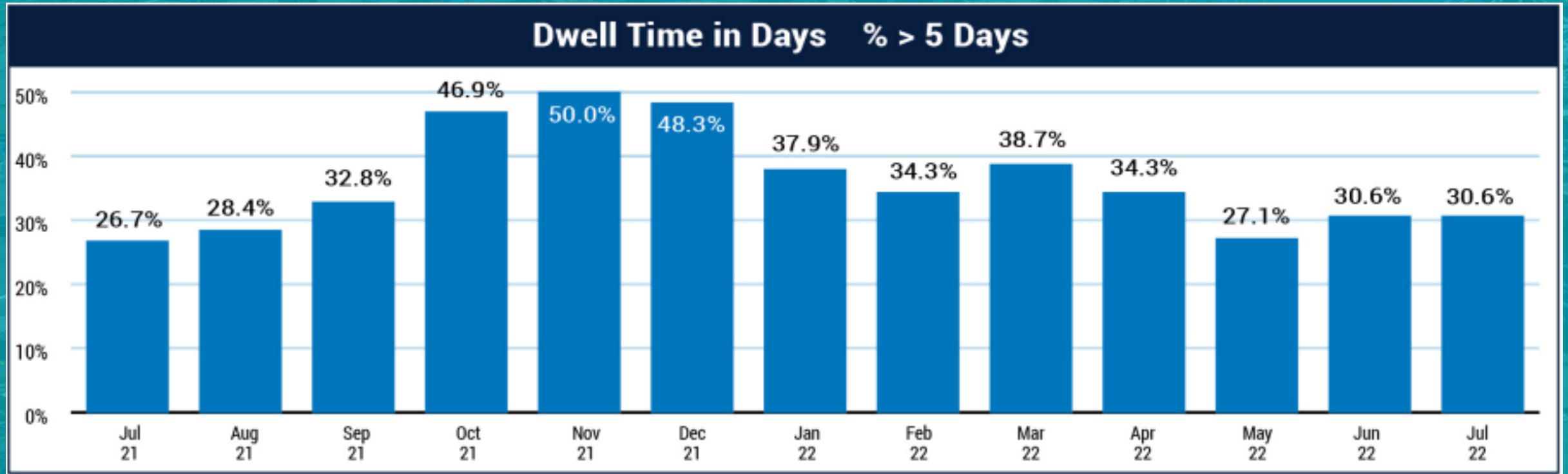


# AUG 2022 VOLUME

CATEGORY	AUG 2022	AUG 2021	% CHANGE
INBOUND	384,530	407,426	-5.6%
OUTBOUND	121,408	119,485	1.6%
EMPTIES	301,002	280,794	7.2%
TOTAL	806,940	807,704	-0.1%



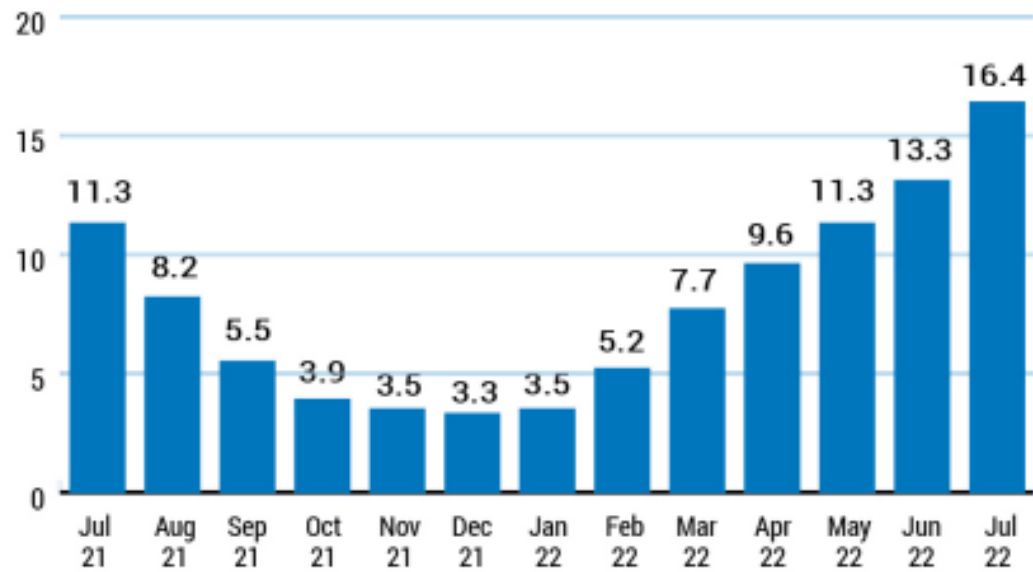
# TERMINAL DWELL



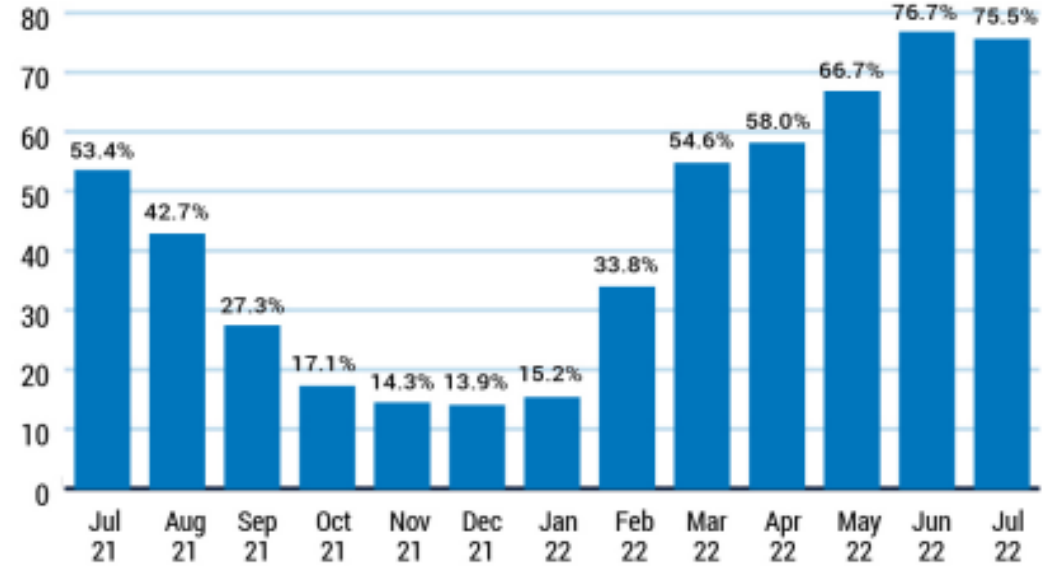


# RAIL DWELL

## Rail Dwell Time in Days

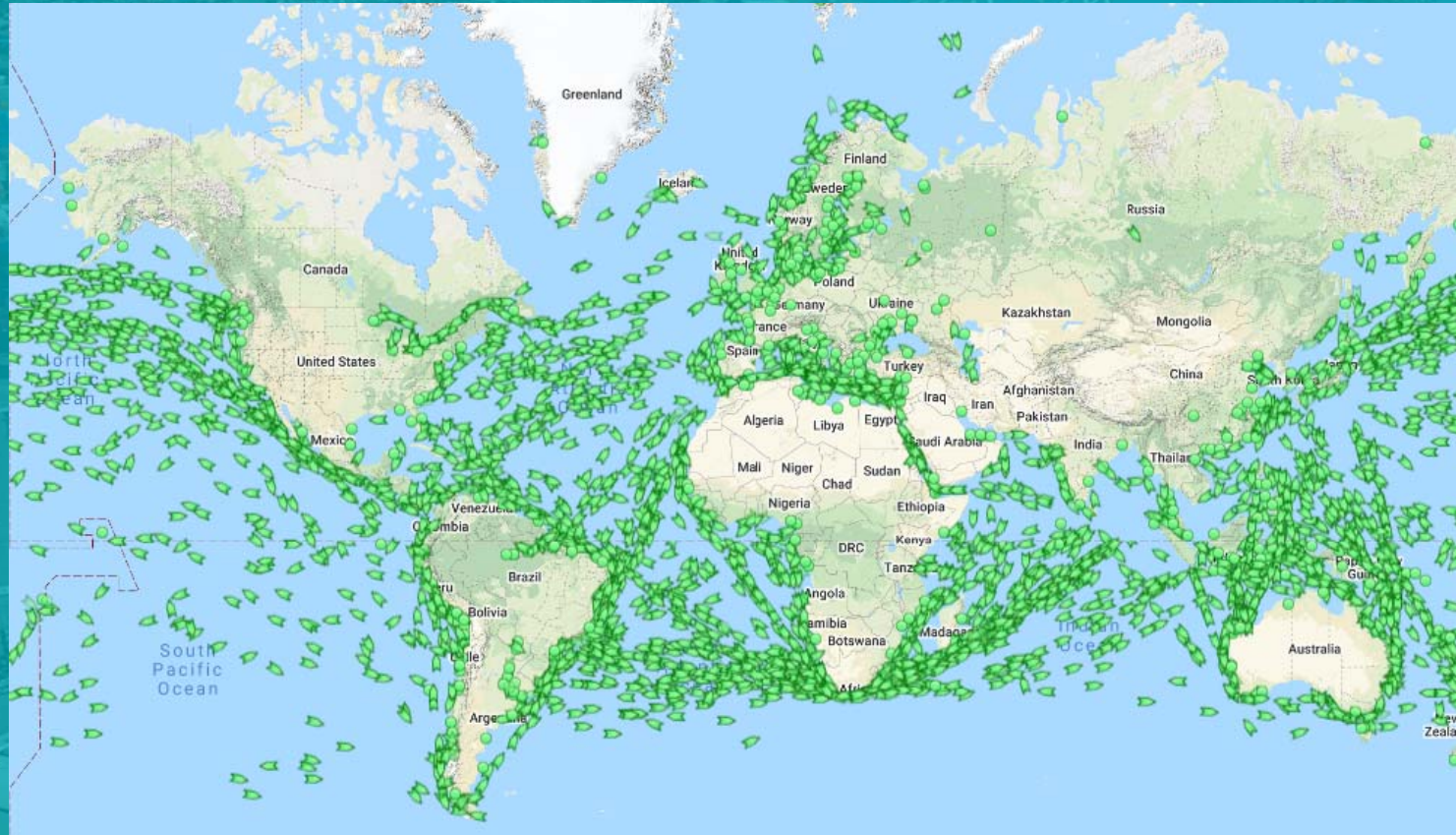


## Rail Dwell Time in Days % > 5 Days





# GLOBAL PORT CONGESTION



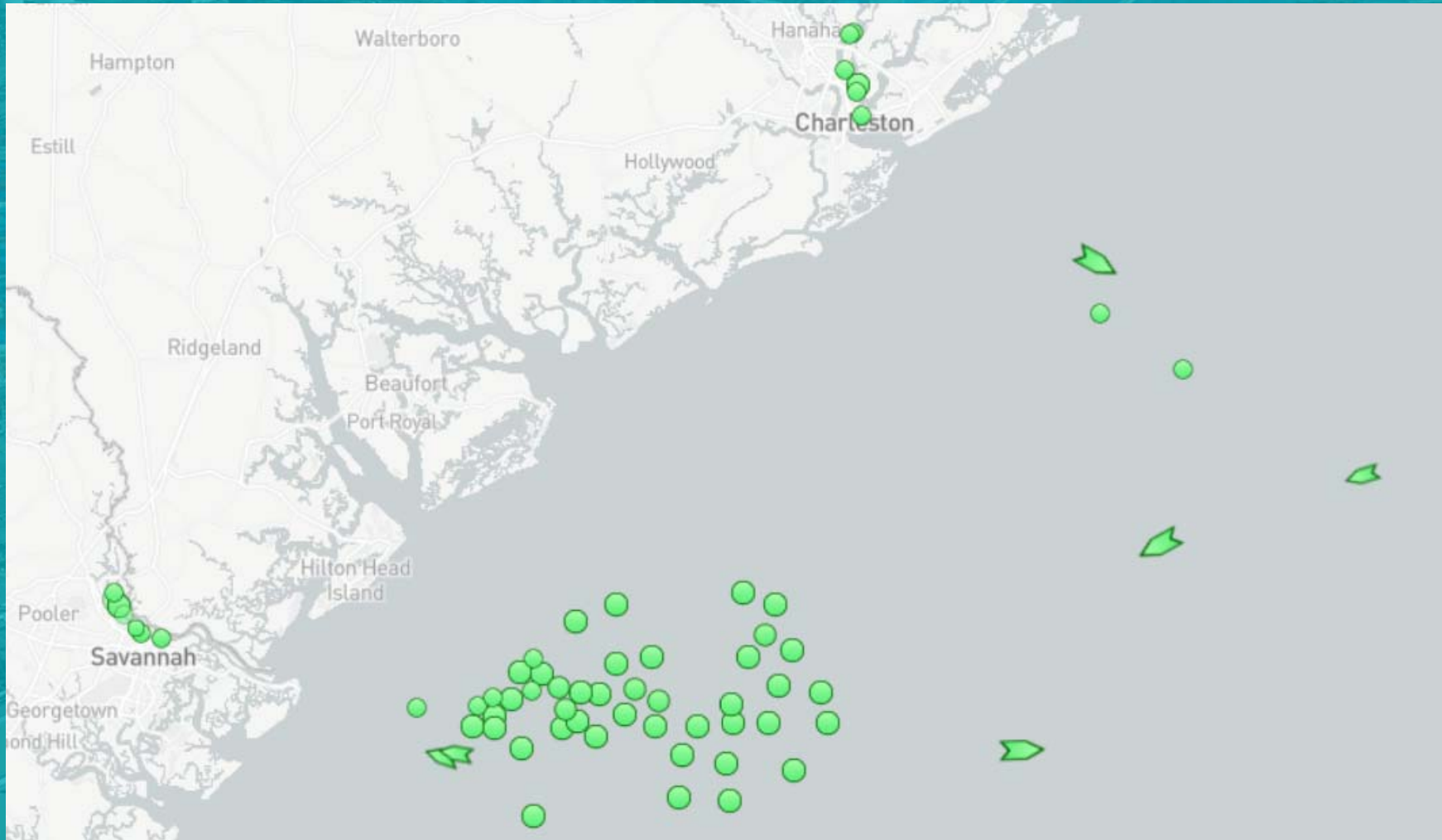


# SAN PEDRO BAY





# SAVANNAH / CHARLESTON



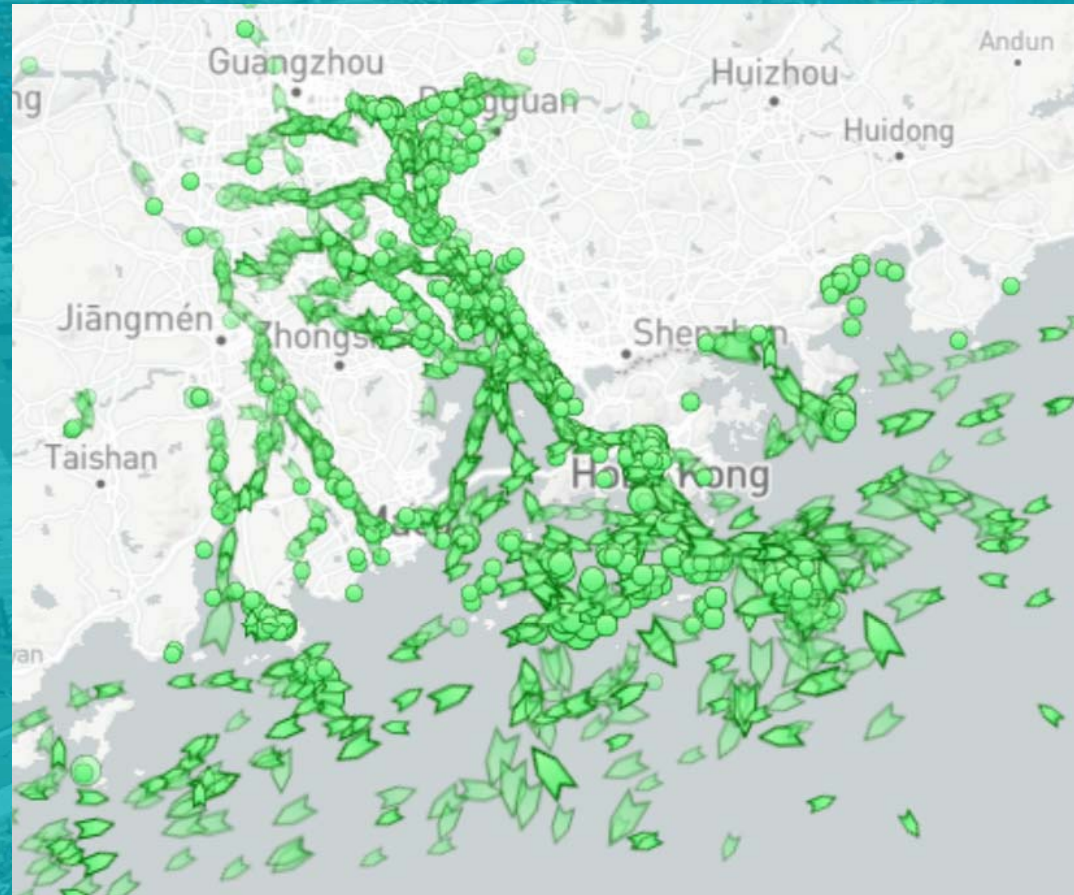


# NEW YORK NEW JERSEY



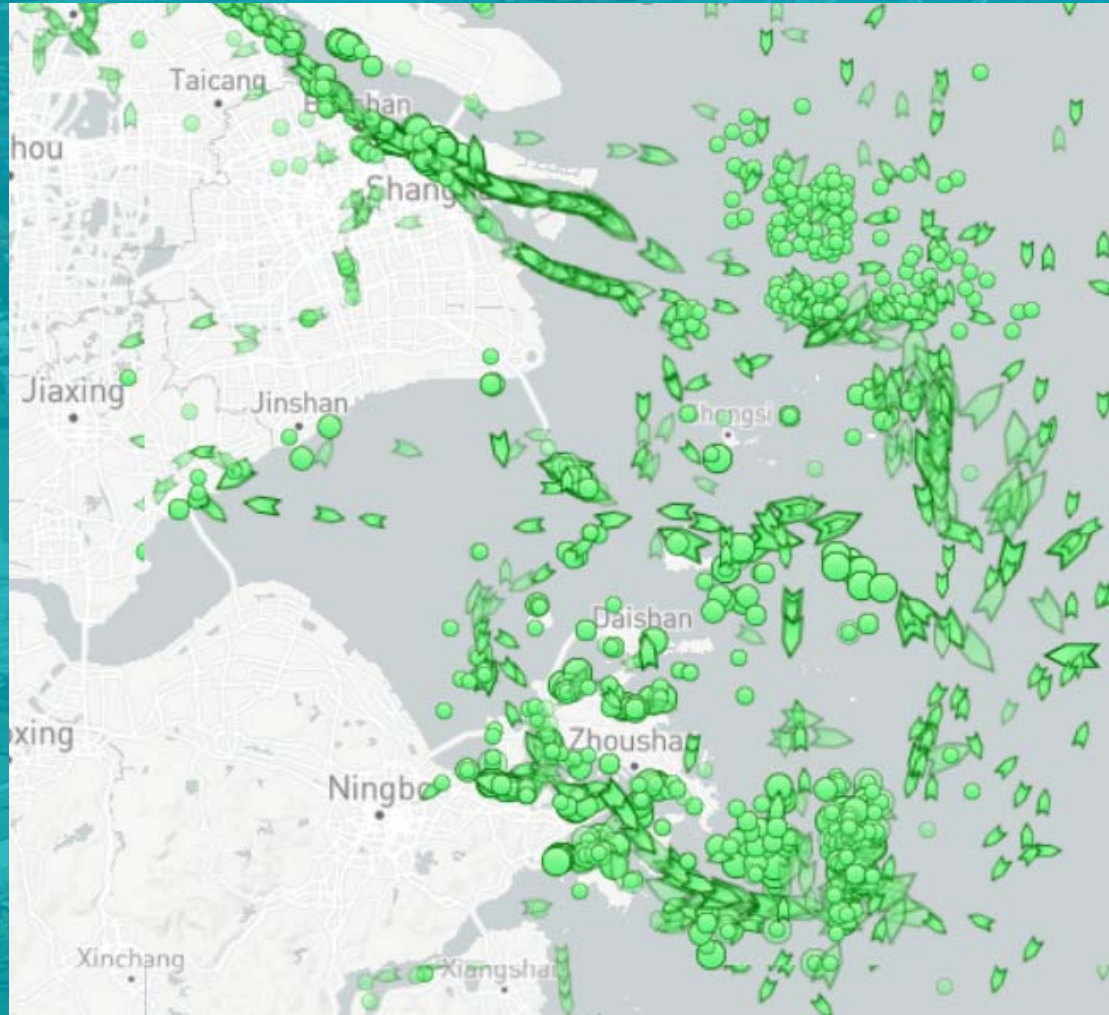


# S. CHINA PEARL RIVER DELTA





# CENTRAL CHINA





# POLB CONGESTION ACTIONS

WAVE & Ops Dashboard

Activated 130 acres underutilized land

Extended gate hours

Congestion Dwell Fee

Supply Chain Information Highway



Search

**OPERATIONS DASHBOARD**

WEEKLY OCEAN CARRIER SERVICES

CONTAINER VESSELS AT BERTH

CONTAINERIZED TENANTS ▼

DRY BULK TENANTS ▼

LIQUID BULK TENANTS ▼

BREAK BULK & RORO TENANTS ▼

OVERWEIGHT / OVERSIZE CARGO ▼

SUPPLY CHAIN INFORMATION  
HIGHWAY

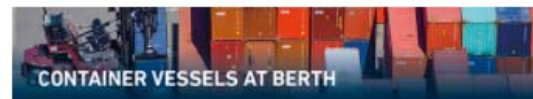
DEMURRAGE CALENDAR

PORT TARIFF

FACILITIES GUIDES & TIDETABLES

SUPPLY CHAIN INSIGHT VIDEO  
SERIES

**OPERATIONS DASHBOARD**



[www.polb.com/operations](http://www.polb.com/operations)





# PIER S SHORT TERM OVERFLOW RESOURCE (STOR)



**VESSEL SCHEDULE**  
• Scheduled Port Calls

**TERMINAL: EDI 322**  
• Load / Unload Ship  
• Load / Unload Rail

**TERMINAL: EDI 322**  
• In-Gate / Out-Gate

**PILOT SCHEDULE**  
• Scheduled Berthing Events

**OCEAN EDI 315**  
• Vessel Arrival /  
Departure  
• Vessel Load /  
Unload

**CUSTOMS: EDI 309**  
• Discharge

**TERMINAL: EDI 418**  
• Equipment Load /  
Empty

**OCEAN: EDI 301**  
• Vessel Departure  
• Port Arrival  
• Pickup / Delivery  
Date

**TERMINAL: EDI 350**  
• Customs Release





# CAPITAL IMPROVEMENTS

\$2.3 billion approved in State budget for goods movement and supply chain projects

\$52.3 million grant for Pier B On-Dock Rail Project

\$8 million from Federal Infrastructure Law to improve navigation efficiency & safety



# CAPITAL IMPROVEMENTS

\$2.6 BILLION – NEXT 10 YEARS







# PIER B ON-DOCK RAIL SUPPORT FACILITY



# LONG BEACH INTERNATIONAL GATEWAY BRIDGE

\$1.5 BILLION





# LONG BEACH CONTAINER TERMINAL





# 2022 OUTLOOK

Continued COVID Impacts

China's Zero-COVID Policy

Consumer Demand/E-Commerce

Inventory-to-Sales Ratio/Inventory Replenishment

PMA-ILWU Contract Negotiation





# THANK YOU!

## Q&A



Port of  
**LONG BEACH**  
THE PORT OF CHOICE

**Cesar Sanchez**  
Business Development Manager  
Business Development Division  
Cesar.Sanchez@polb.com  
562-480-2353