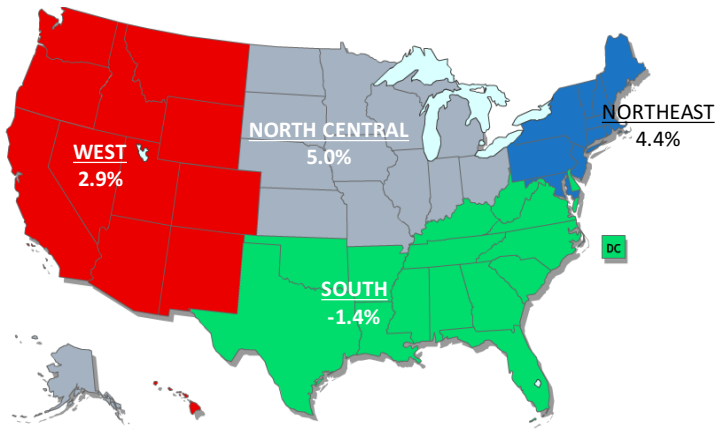
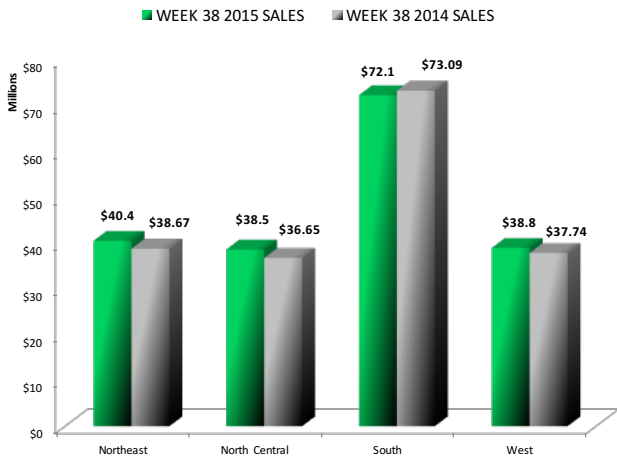




**SALES SURVEY**  
**WEEK ENDING: October 24, 2015**

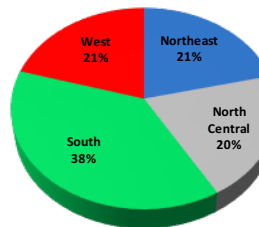


<b>THREE WEEKS ENDING</b>		
2015:	\$568,027,893	1.8%
2014:	\$557,866,115	-2.7%
<b>YEAR TO DATE ENDING</b>		
2015:	\$8,520,042,380	1.9%
2014:	\$8,364,639,910	1.0%

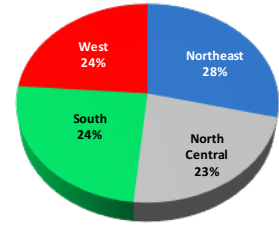


Regions	Week 38 2015 Sales	Week 38 2014 Sales	Number of Stores	Results of 2015 Survey (%)	Results of 2014 Survey (%)
Northeast	\$40,382,903	\$38,674,827	1,967	4.4	-1.6
North Central	\$38,489,659	\$36,650,314	2,381	5.0	-5.9
South	\$72,103,759	\$73,092,056	4,110	-1.4	-0.1
West	\$38,821,131	\$37,735,347	2,289	2.9	-1.8
Survey Total	\$189,797,452	\$186,152,544	10,747	2.0	-2.0

2015 SALES BY REGION (% TO TOTAL)



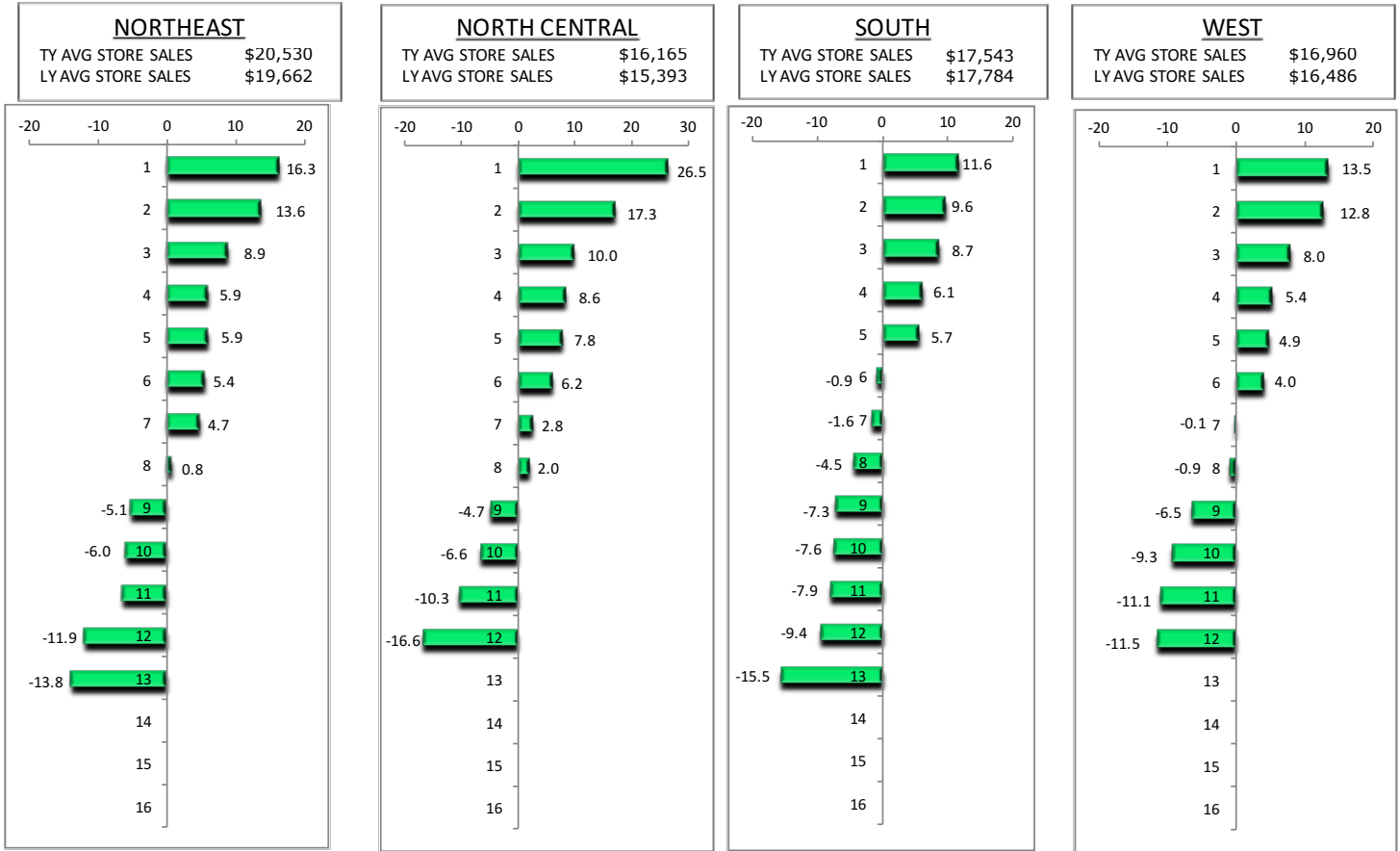
2015 AVG STORE SALES % BY REGION



Note: Report includes store-for-store, comparable results. Some companies do not report geographically.



## SALES COMPS BY COMPANY RANK V. LY



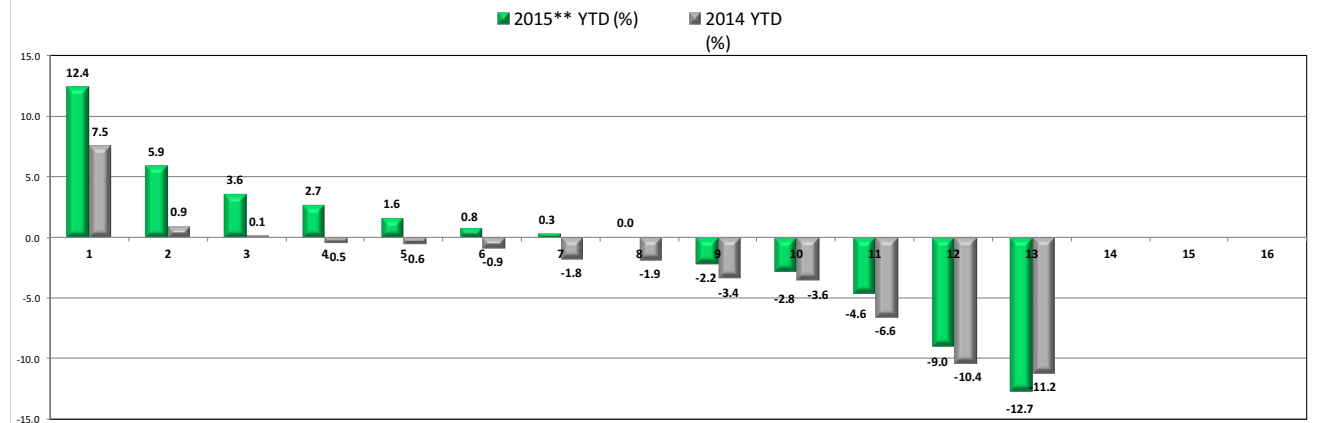
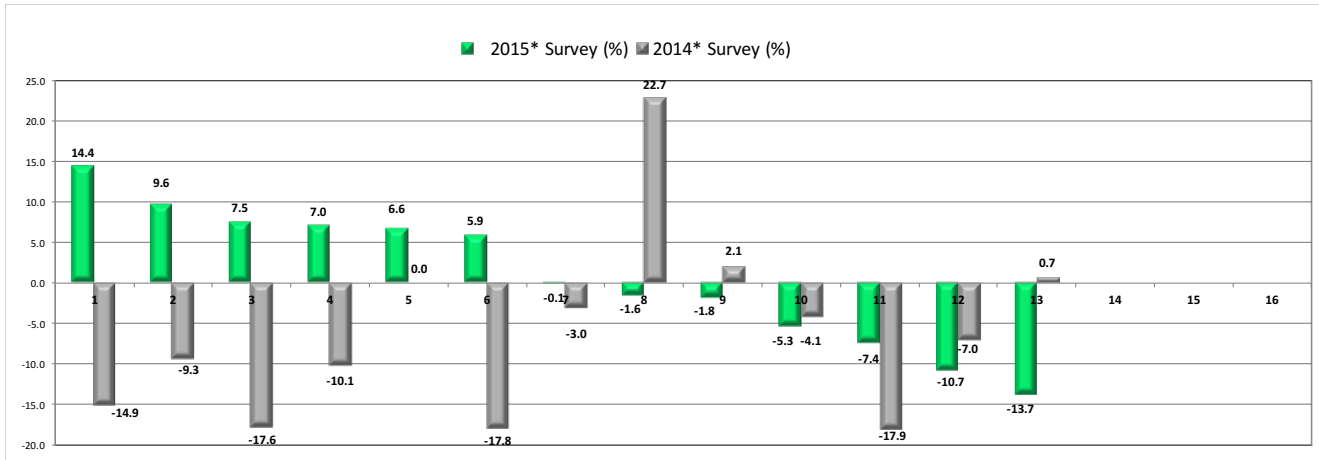
Breakdown By Region  
Week Ending: October 24, 2015

\* Results for the current week's survey by region are listed showing the best performing company first in each region. If you have any questions, please contact Faith Lewis at 202-737-5660, or flewis@fdra.org.

North East	North Central	South	West
16.3	26.5	11.6	13.5
13.6	17.3	9.6	12.8
8.9	10.0	8.7	8.0
5.9	8.6	6.1	5.4
5.9	7.8	5.7	4.9
5.4	6.2	-0.9	4.0
4.7	2.8	-1.6	-0.1
0.8	2.0	-4.5	-0.9
-5.1	-4.7	-7.3	-6.5
-6.0	-6.6	-7.6	-9.3
-6.5	-10.3	-7.9	-11.1
-11.9	-16.6	-9.4	-11.5
-13.8		-15.5	
<b>4.4</b>	<b>5.0</b>	<b>-1.4</b>	<b>2.9</b>



## INDIVIDUAL COMPANY PERFORMANCE BY SURVEY AND YTD



\* Results for the current week's survey are listed showing the best performing company first with that company's results from the survey a year earlier next to it.  
 \*\* The year to date (YTD) figures are a separate survey with the best performing YTD company listed first. YTD figures are an accumulation of original weekly reported numbers and do not include back postings or adjustments that may occur. If you have any questions, please contact Faith Lewis at 202-737-5660, or flewis@fdra.org.

### Individual Company Percent Change Date: October 24, 2015

2015* Survey (%)	2014* Survey (%)	2015** YTD (%)	2014 YTD (%)
14.4	-14.9	12.4	7.5
9.6	-9.3	5.9	0.9
7.5	-17.6	3.6	0.1
7.0	-10.1	2.7	-0.5
6.6	0.0	1.6	-0.6
5.9	-17.8	0.8	-0.9
-0.1	-3.0	0.3	-1.8
-1.6	22.7	0.0	-1.9
-1.8	2.1	-2.2	-3.4
-5.3	-4.1	-2.8	-3.6
-7.4	-17.9	-4.6	-6.6
-10.7	-7.0	-9.0	-10.4
-13.7	0.7	-12.7	-11.2
<b>2.0</b>	<b>-2.0</b>	<b>1.9</b>	<b>1.0</b>