



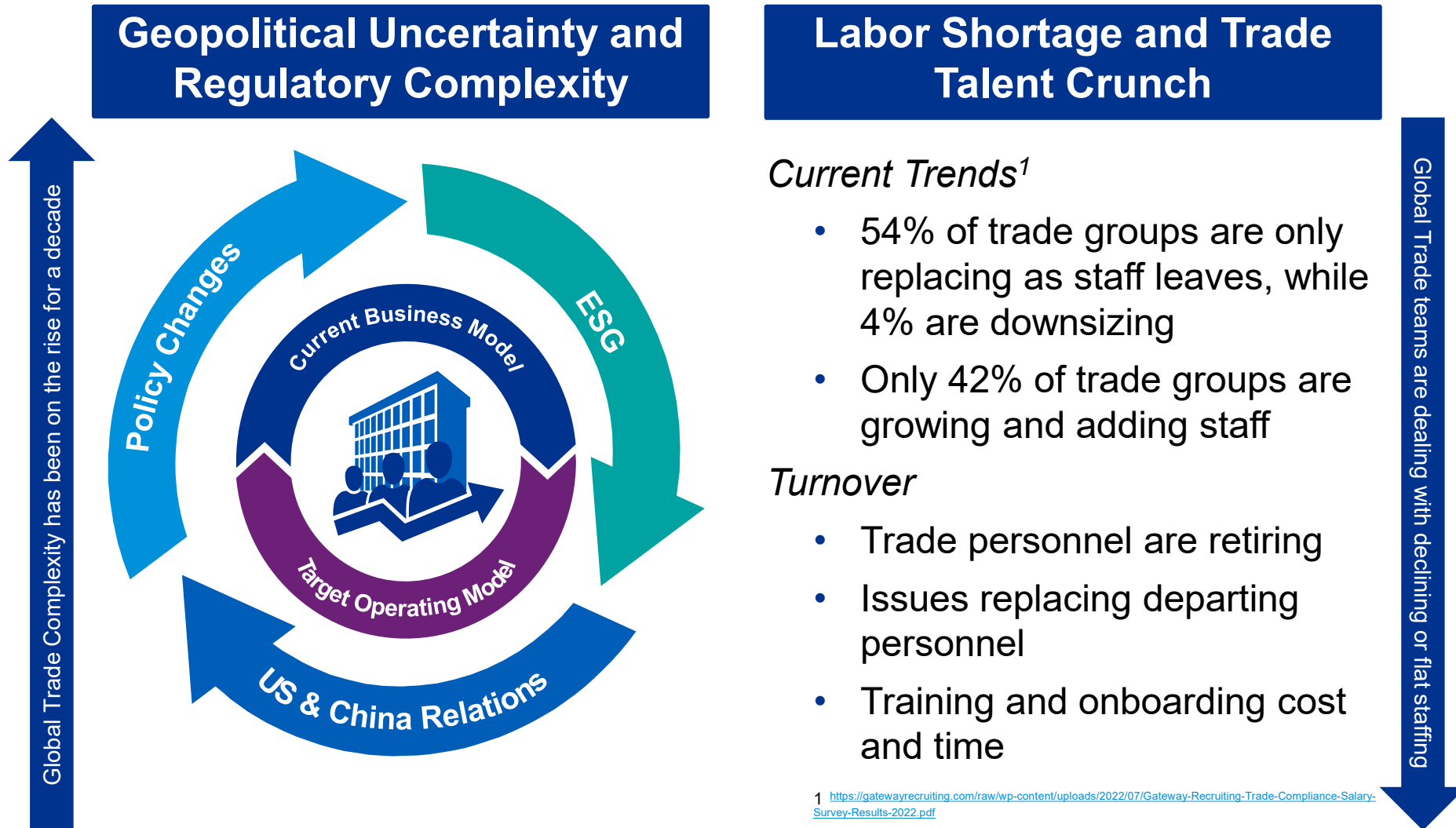
# How to Do More with Less in a Difficult Trade Environment

FDRA Trade, Logistics, and Customs Meeting

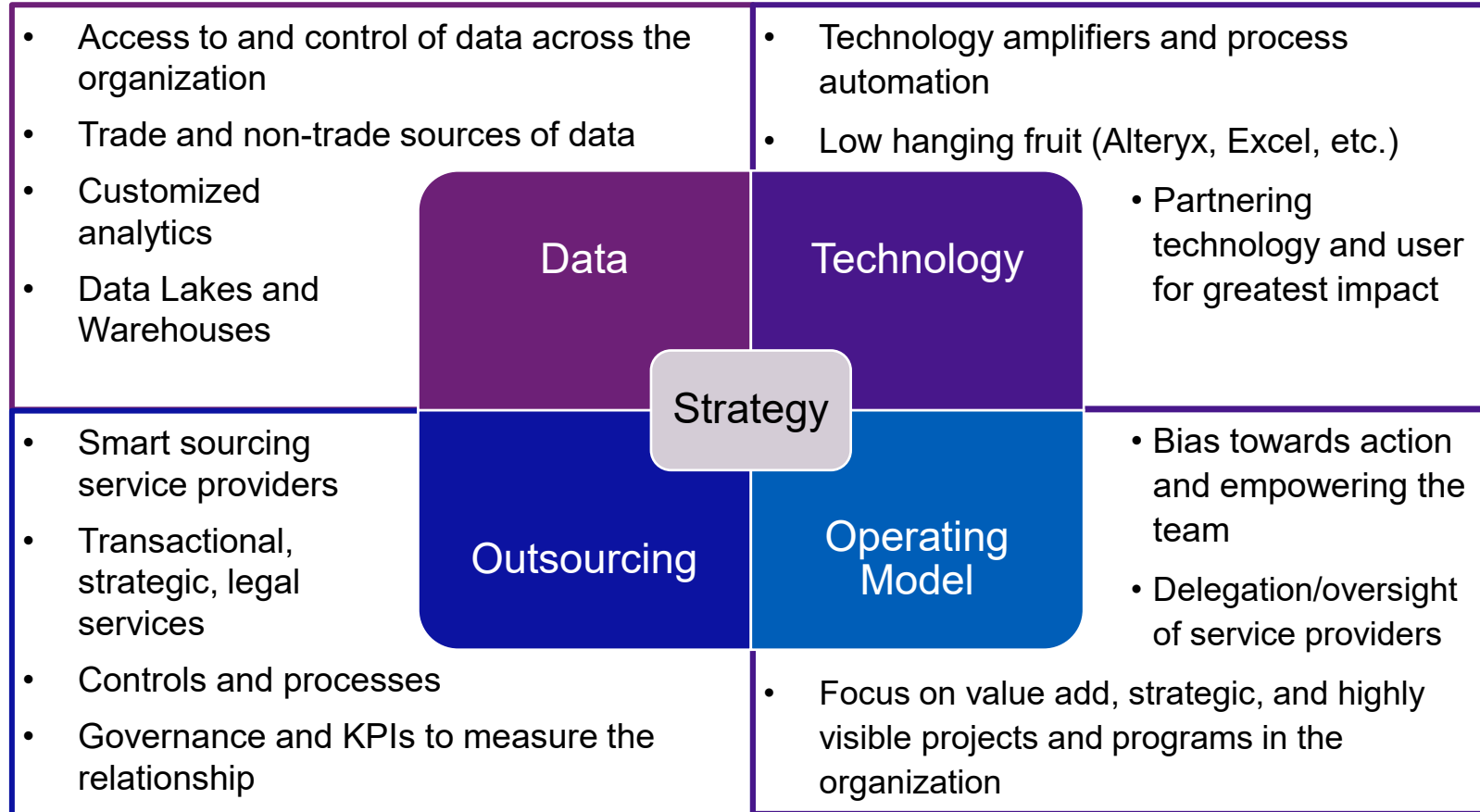
October 13, 2022



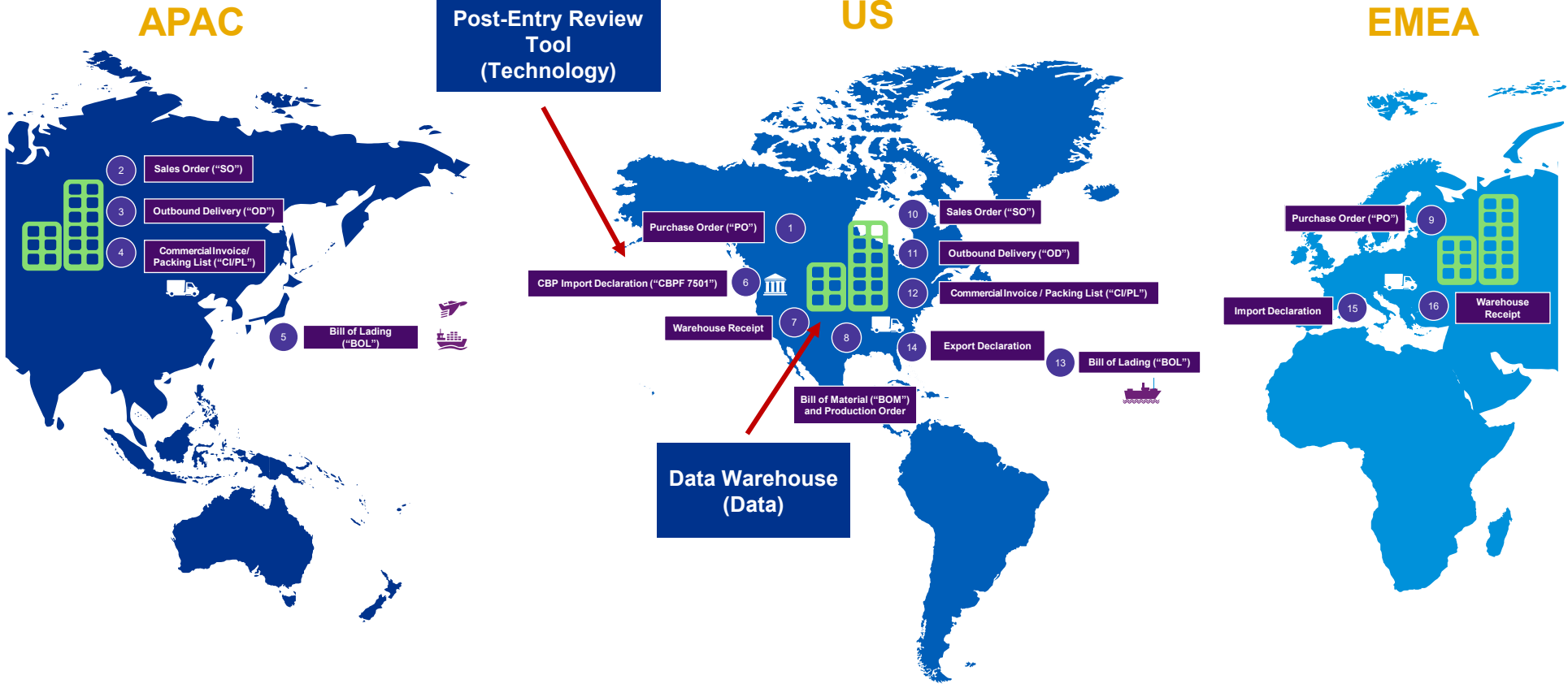
# Why are we faced with less?



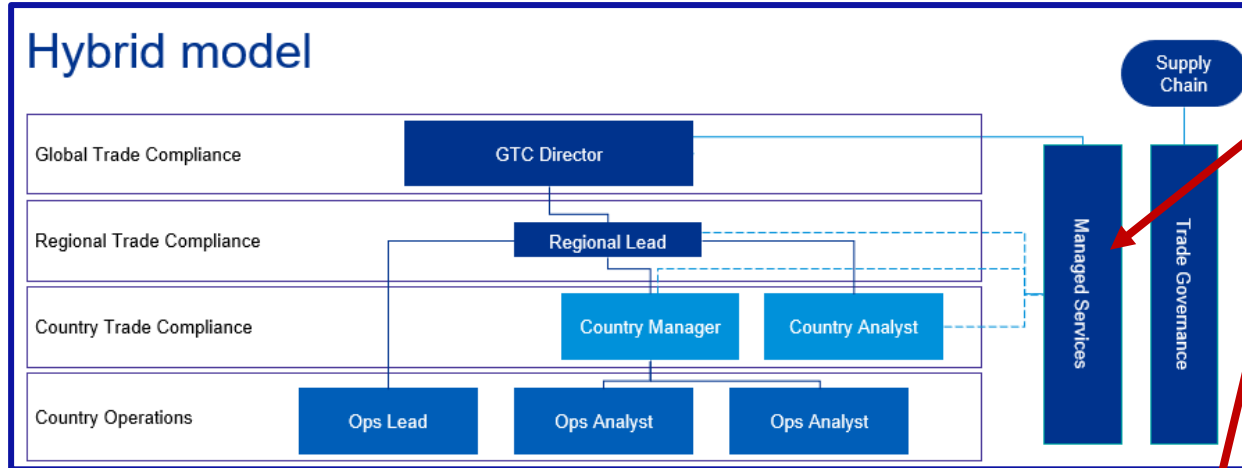
# How can we do more?



# Data and Technology

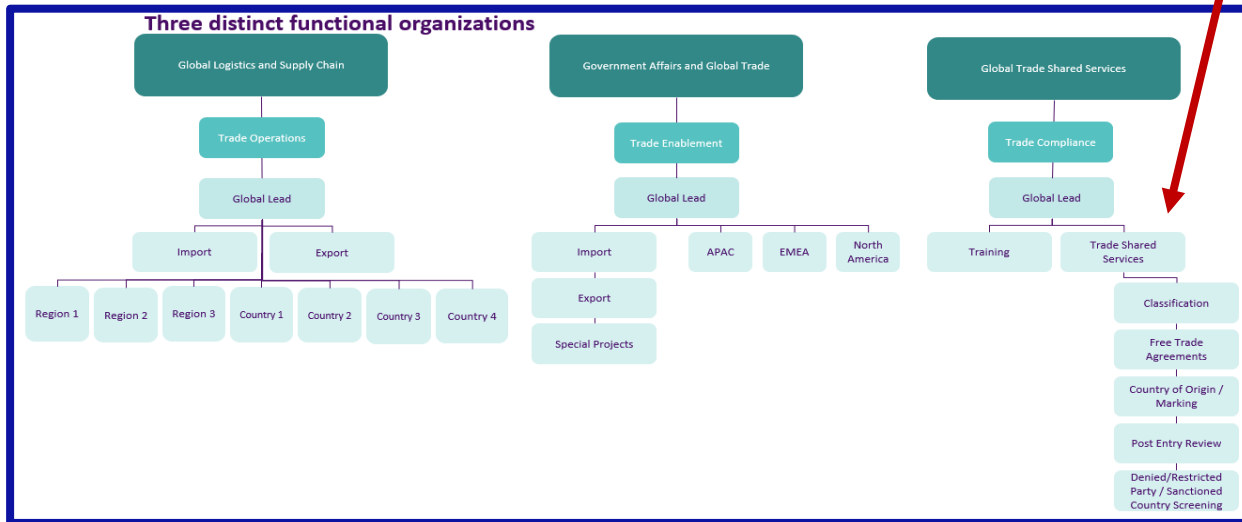


# Operating Model and Outsourcing



## Outsourcing Triggers and Considerations

- Cost savings
- Strategic vs. Non-strategic
- Low value add and transactional work
- Process is stable and/or mature
- Wider scope and breadth of coverage





# Questions?



Thank you



**Brian Beyer**

Manager, Trade & Customs

[brianbeyer@kpmg.com](mailto:brianbeyer@kpmg.com)

(716) 997-8544

**Nicole Porpiglia**

Senior Manager, Trade & Customs

[nporpiglia@kpmg.com](mailto:nporpiglia@kpmg.com)

(914) 879-1692

Some or all of the services described herein may not be permissible for KPMG audit clients and their affiliates or related entities.



[kpmg.com/socialmedia](https://kpmg.com/socialmedia)

The information contained herein is of a general nature and is not intended to address the circumstances of any particular individual or entity. Although we endeavor to provide accurate and timely information, there can be no guarantee that such information is accurate as of the date it is received or that it will continue to be accurate in the future. No one should act upon such information without appropriate professional advice after a thorough examination of the particular situation.

© 2021 KPMG LLP, a Delaware limited liability partnership and a member firm of the KPMG global organization of independent member firms affiliated with KPMG International Limited, a private English company limited by guarantee. All rights reserved.

The KPMG name and logo are trademarks used under license by the independent member firms of the KPMG global organization.